



COVID Town Hall Meeting

The Suzuki School

July 14, 2021

Townhall Meeting Agenda

- *COVID19 protocol update*
- *Quick update on Procare access*
- *Questions and answers*

Note: this meeting is being recorded and will be available later!

Our Ongoing Commitments

- To maintain mitigating measures to protect those who are unable to be vaccinated, including children with compromised immune systems.
- To continue to be precautionous as we learn more about new variants such as the Delta and Gamma Variants.
- To limit, to the extent possible, classroom closures due to COVID-19 exposures.
- For our faculty and staff to be on board with our approach.

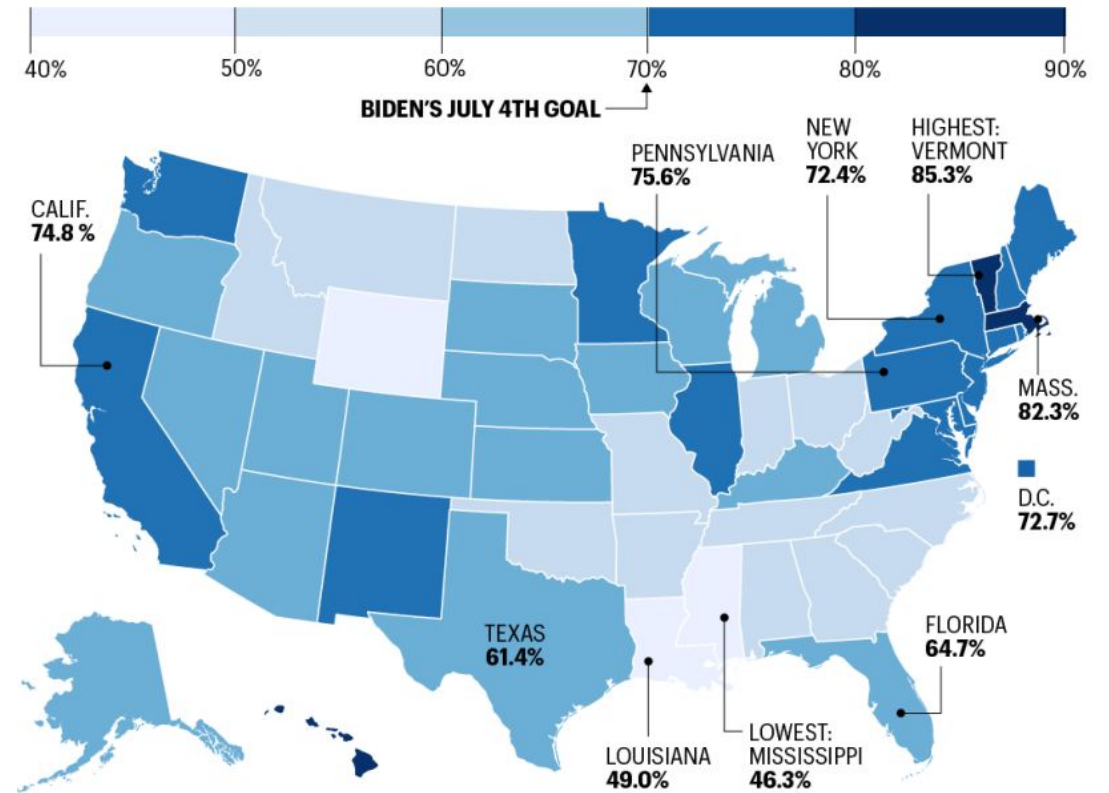


Status of Faculty Vaccinations

- The majority of our faculty are vaccinated; ranging from 65-90% based on individual campuses.
- Vaccine Incentives:
 - We offered incentives for current faculty to become vaccinated March through May.
 - New faculty have an incentive to be vaccinated upon hire or within the first 30 days.
- HIPPA Considerations: We cannot share who has been vaccinated and who has not and we cannot put protocols in place that divulge this.

COVID-19 STATE VACCINE TRACKER

SHARE OF THE POPULATION AGE 18+ THAT RECEIVED AT LEAST ONE SHOT



SOURCE: CENTERS FOR DISEASE CONTROL AND PREVENTION

DATA THROUGH 7/1/2021

FORTUNE

Suzuki School COVID Protocols Overview – *Key Policies that Continue*

Social distancing measures: No commingling of unvaccinated staff or children.

Masks for all adults and children over three years old while indoors.

Exclusion policies for symptomatic individuals.

Enhanced cleaning protocols.

Carpool/outdoor drop off and pick up procedures.

Limit those entering the building.

Health checks for all who enter.

Contact tracing practices.

Guiding Sources

- Center for Disease Control
- GA Department of Health
- American Academy of Pediatrics (child specific)
- Bright from the Start:
Department of Early Learning



7/9/2021 CDC Guidance for Early Care and Education Programs – Key Takeaways!

1. Vaccination is currently the leading public health prevention strategy to end the COVID-19 pandemic. Promoting vaccination among eligible individuals can help Early Care and Education (ECE) programs protect staff and children in their care, as well as their families.
2. Most ECE programs serve children under the age of 12 who are not yet eligible for vaccination at this time. Therefore, this guidance emphasizes maintaining layered COVID-19 prevention strategies (e.g., using multiple prevention strategies together) to protect children and adults who are not fully vaccinated.
3. COVID-19 prevention strategies remain critical to protect people, including children and staff, who are not fully vaccinated, especially in areas of moderate-to-high community transmission levels.
4. Masks should be worn indoors by all individuals (ages 2 and older) who are not fully vaccinated. ECE settings may implement universal mask use in some situations, such as if they serve a population not yet eligible for vaccination or if they have increasing, substantial, or high COVID-19 transmission in their ECE program or community.
5. Localities should monitor community transmission, vaccination coverage, the occurrence of outbreaks, and local policies and regulations to guide decisions on the use of layered prevention strategies.



CDC Guidance – Synopsis

- Adults who are not vaccinated are not mandated to wear masks, although in a building, a universal policy is acceptable.
- Masks are not needed outside.
- If schools decide to loosen restrictions, they should do so one at a time and have a testing program in place for unvaccinated children and adults.
- Continue with social distancing including separate classrooms.
- Exclusion periods due to COVID exposure have not changed.





State Level Changes

- Governor Kemp has removed the State of Emergency effective in July 2021:
 - Removes mandated restrictions and leaves it up to individual businesses to decide.
 - Maintains that if there is a direct exposure, isolation and quarantines must still be practiced.
 - Parents will resume right of access to the building to observe the child.

We Will Not Change Protocols Based On...



Media Reports



Internet Searches or
Sources (other than
those previously listed)



Non-mainstream Medical
Publications



Research Reports or
Studies

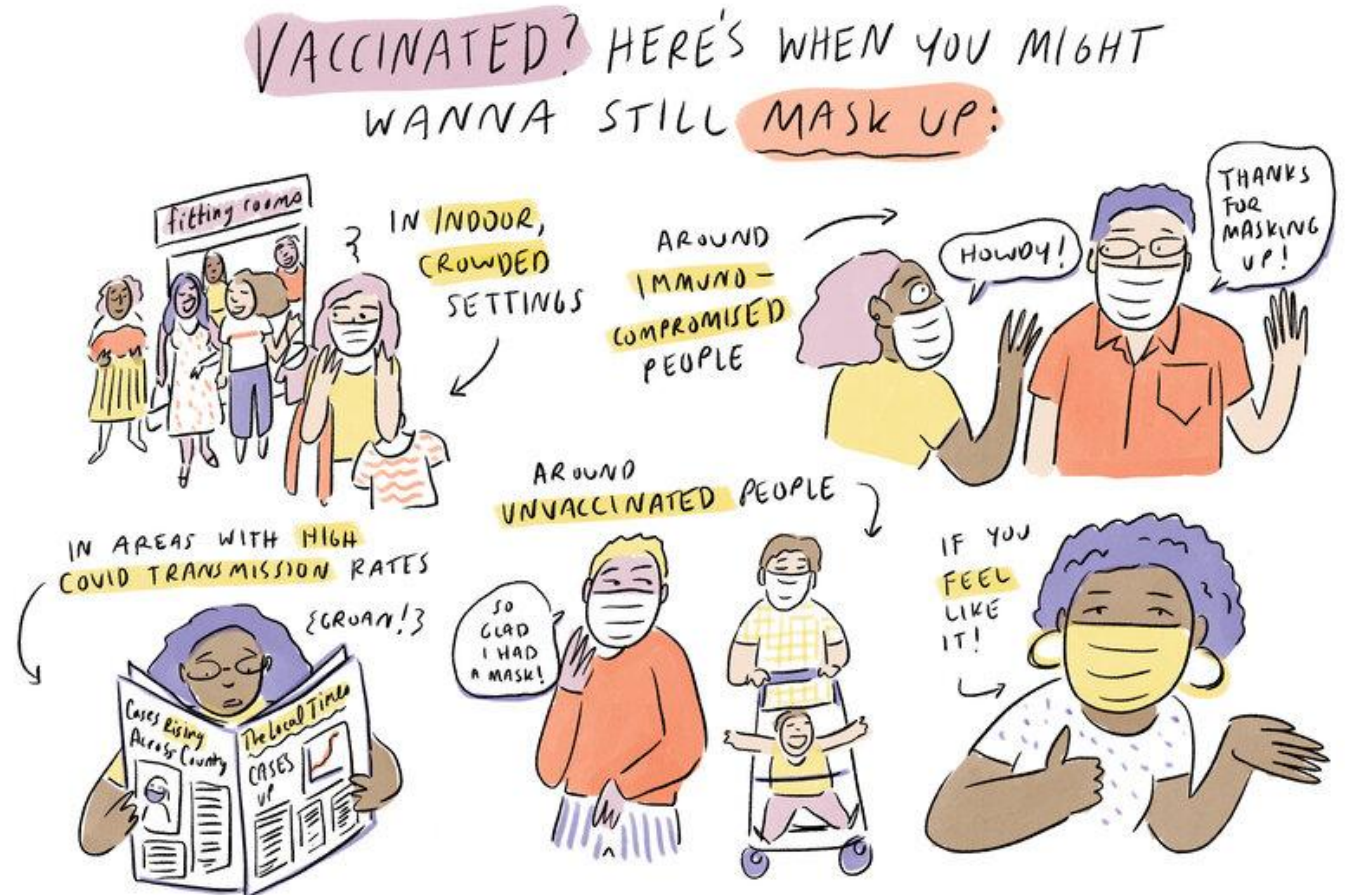
Masks

- Our students have become proficient with masks and have many opportunities for breaks during the day
 - Meals/snacks
 - Outside time
 - Nap/rest
- We continue to experiment with clear masks but are challenged to find effective ones!



When We Ask for Masks

- At outdoor drop off and pick up, masks are now optional (per CDC guidance).
- When entering the school building, masks are required for individuals three and older.
- Face shields may be an option for vaccinated faculty in certain circumstances (with doctors note).
 - MEFS screenings for Primary aged students will be completed by vaccinated staff wearing face shields this fall.



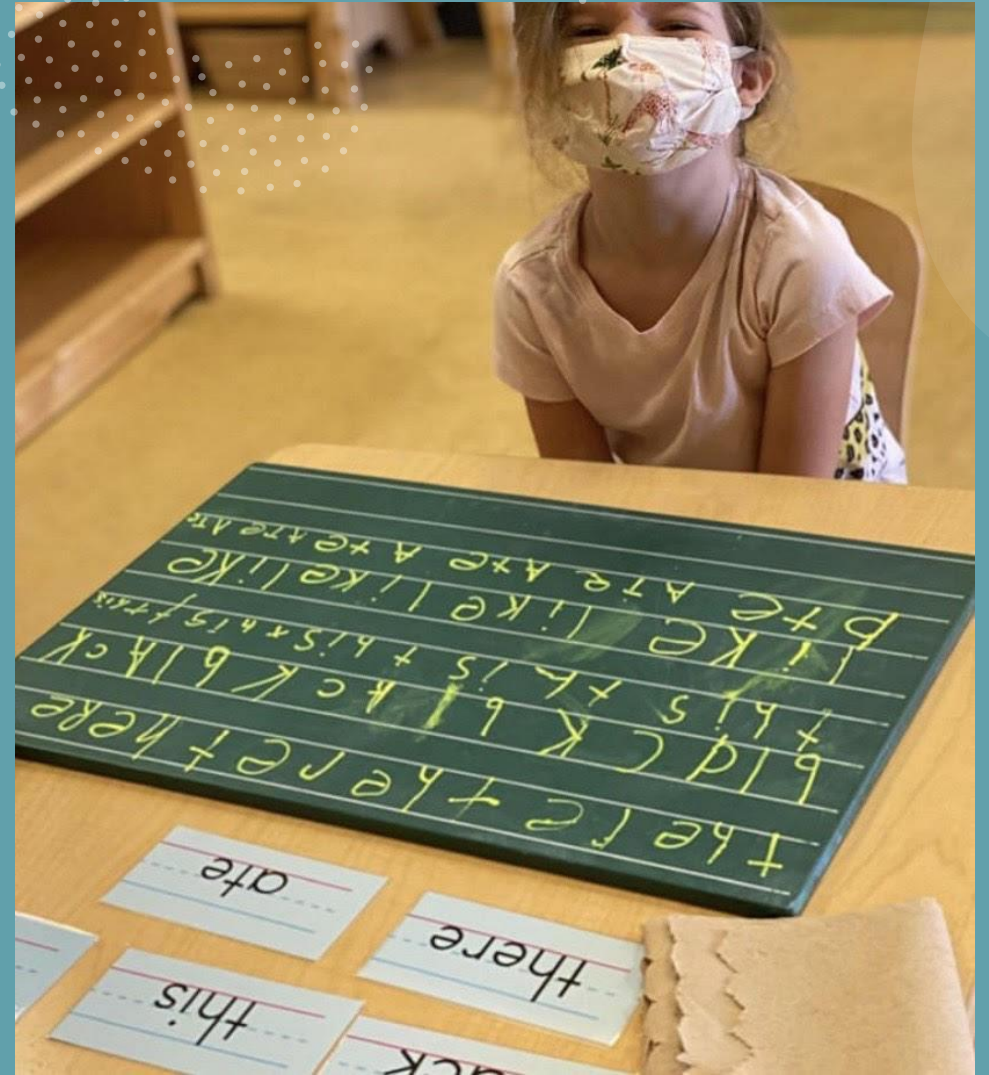
Operating Hours

- *Labor shortages continue to stymie to our ability to safely extend hours.*
- Our biggest challenge has been securing a stable substitute pool, which is an essential piece of extending the hours of operation.
- Faculty have not yet been able to resume early release/late arrival days, a benefit to them pre-COVID.
- When we feel more stability, we will begin incremental increases (15 minutes at a time) to ensure we can maintain adequate staff to child ratios and the health and safety of our students.



Carpool – A Welcome Innovation!

- Children are overall far more settled and content:
 - Smoother transitions to and from school
 - Smoother transitions during classroom move ups
 - Less separation anxiety for students – a major decrease
 - Less disruptions to classroom and teachers from late arrivals, which has strengthened the Montessori Work Cycle and enhanced student focus
 - Less illness in the building overall
- We plan to continue with external drop offs moving forward.



Parental Access

- **Bright from the Start health and safety regulations are rigorous and are in place to keep your children safe.**
- Despite the fact that many parents have been vaccinated, we cannot reasonably or reliably track this.
- Our goal is to provide a balanced approach:
 - So that we continue to reduce the instances of contagious illness spreading.
 - So that we balance teacher concerns about increasing foot traffic and face to face interactions in the building.
 - So we can more closely manage the number of visitors in the building and properly checking them in.
 - So that children and faculty are not put at unnecessary risk.
- *If you feel strongly that you would like to observe your child's classroom or meet with campus leadership in person, we can arrange this by appointment. All visitors undergo a health check upon entry and must wear a mask.*



Parent Partnership

- *our partnership with you is something we value and want to honor and preserve.*
- We are brainstorming ways to ensure parents feel connected to our school community and most importantly, the teachers, despite changes in access to the building.
 - Exploring offering mini conferences with teachers between the fall and spring (virtual check ins).
 - Parents can schedule a time to come in and observe from outside anytime, or you can request a phone/Zoom call anytime with your classroom teachers.
 - Parents can schedule meetings with directors - via zoom or in person (all Directors can meet with parents)
 - Continue to utilize Procure, Instagram, and Transparent Classroom to keep you informed and ramp up our efforts on these platforms that are already in place.
 - If you have ideas, please share them with your campus leadership!

Criteria for Visiting Parents

Parents who want to come into the building to observe can do so, however we ask that you observe some guidelines:

- Don't combine drop off with observation – allow a cushion to prevent separation issues for your child.
- Wear a mask and observe outside the window outside of view from your child.
- Teachers will not be able to talk with you, and we ask that there is not congregation of several parents.
- Be aware that in some classrooms the children can see you and after a year without observers, this will be new for the children.
- *Although you have the right to immediate access to your child and we cannot keep you from the building, we do ask that you schedule an appointment so that we can ensure social distancing.*



Status of School Health Policy

- Since June 1, 2020, our exclusion policy has been more stringent for those who are not vaccinated in terms of:
 - Length of time (Before: day after next, Now: 48 hours symptom free)
 - More conservative in our approach when symptoms are present
 - Doctor's notes accepted on a case by case basis in coordination with the Nurse
- This policy change has had a positive result and has kept other childhood illnesses from spreading rapidly in classrooms.
- Since COVID, common cold, the flu and other contagious illnesses have similar symptoms we will continue with this policy.



Status of School Health Policy

- Exclusion Guidelines – 48 Hours Symptom Free to Return:
 - Two or more diarrhea or vomiting episodes with in 24 hours.
 - Temp of 100.4 or higher
 - Undiagnosed rash
- Tylenol, Motrin, or other fever reducing medications are not allowed to be administered to students before school without prior approval (morning of or the night before).

Procare Conversion- Information for Parents

After drop off today, the school started the migration from Procare Online to Procare Desktop.

- When you log onto Parent Engagement App it will point to the new database
 - On 7/14 you will clock on (and there will no be a clock out time today)
 - All the features are the same except the payment portal has been disabled but is stil visible.
- To pay, you will need to choose between:
 - Using MyProcare (same log in credentials through a web browser)
 - Setting up an automatic payment



Procure
SOLUTIONS

Payment Options for Procure

Method of Payment	Details	Payment accepted	Pros	Cons
Recurring Payment (recommended method)	Provide the school with a completed Recurring Payment Form. School will charge the first business day of the month.	ACH (no charge) Cards (Credit and Debit - 2.8%)	Easiest option. Can pay via ACH. PCI DSS compliant	May not want to pay on first business day of month.
Parent Pays online through MyProcure site	Go to myprocure.com and pay via card on the portal.	Cards (Credit and Debit - 2.8%)	Parent has control of process	Can only use for cards with 2.8% fees.
Pay by Check	Write check	N/A	Familiar	Check fraud is increasing. If use bank to mail check there are delays/lost checks/fees.

Thank you, Thank you, Thank you.

We've survived the pandemic
intact thanks to your unwavering
support.

We look forward a phenomenal
fall and spring!

Questions, comments?

